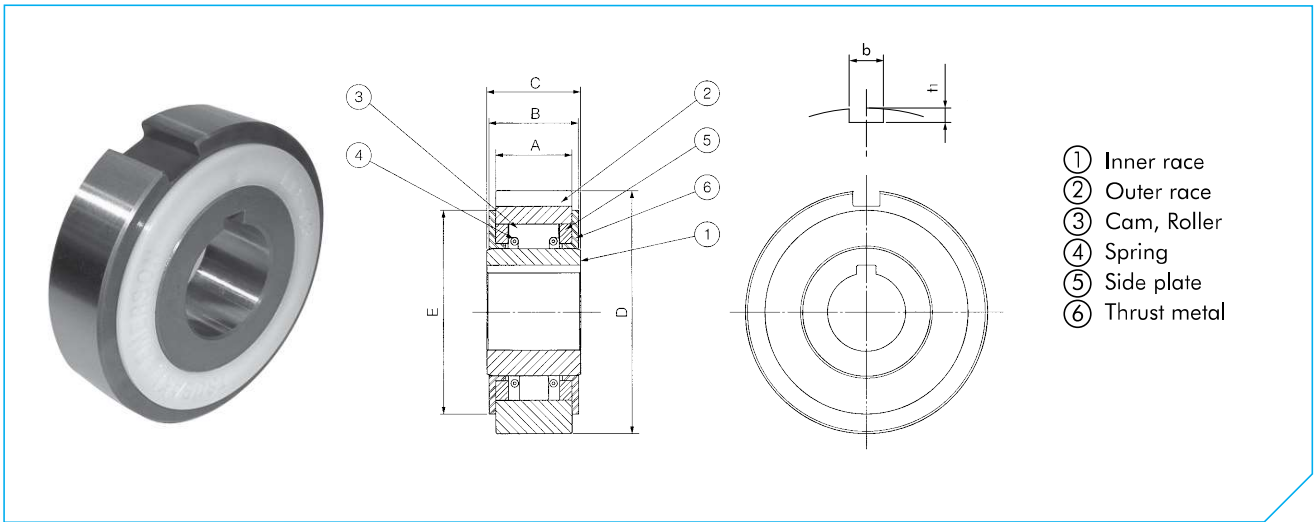


LD SERIES CAM CLUTCH



LD

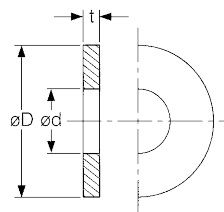
Dimensions in mm

Model	Torque Capacity Nm	Max. Overrunning Speed r/min	Max. Indexing cycle/min	Max. Radial Load When Overrunning N	Drag Torque Nm	Bore Size H7	Inner Race Keyway	A	B	C	D	E	Outer Race Keyway		Approx. Mass kg/pc
													b P10	t1	
LD04	5.88	300	100	200	0.196	10	4 x 1.5	19.5	23.9	24	47 -0.014 -0.039	40	5 x 3	0.25	
LD05	9.80	300	100	300	0.294	14	5 x 2	19.5	23.9	24	52 -0.017 -0.042	45	5 x 3	0.30	
LD06	19.6	200	100	500	0.294	20	5 x 2	19.5	23.9	24	62 -0.017 -0.042	52	7 x 4	0.40	
LD07	29.4	200	100	700	0.392	25	7 x 3	19.5	23.9	24	72 -0.017 -0.042	62	7 x 4	0.55	
LD08	49.0	200	100	800	0.490	30	7 x 3	19.5	23.9	24	82 -0.017 -0.042	70	10 x 4.5	0.65	

Installation and Usage

- LD Series Cam Clutch is prelubricated with special grease and are ready for use. No additional lubricant is required.
- When installing the clutch on the shaft, press the clutch inner race slightly with a soft hammer to prevent the clutch outer race from slipping away from the inner race.
- Be sure to attach the plate. This prevents the outer race from slipping away from the inner race. See recommended dimensions of the plate listed on the right.
- For lubrication, coat the plate and thrust plate with grease.
- Never apply thrust loads to the clutch. Other devices should be provided to take up thrust loads applied to the clutch.
- Key should be in accordance with JIS B1301-1959.
- The bores of the pulley, sprocket, etc., should have a tolerance of H6 or H7.

Recommend Plate Dimensions



Model	t	ød	øD
LD04	2	10	40
LD05	2	14	45
LD06	3	20	52
LD07	3	25	62
LD08	3	30	70

Installation example

